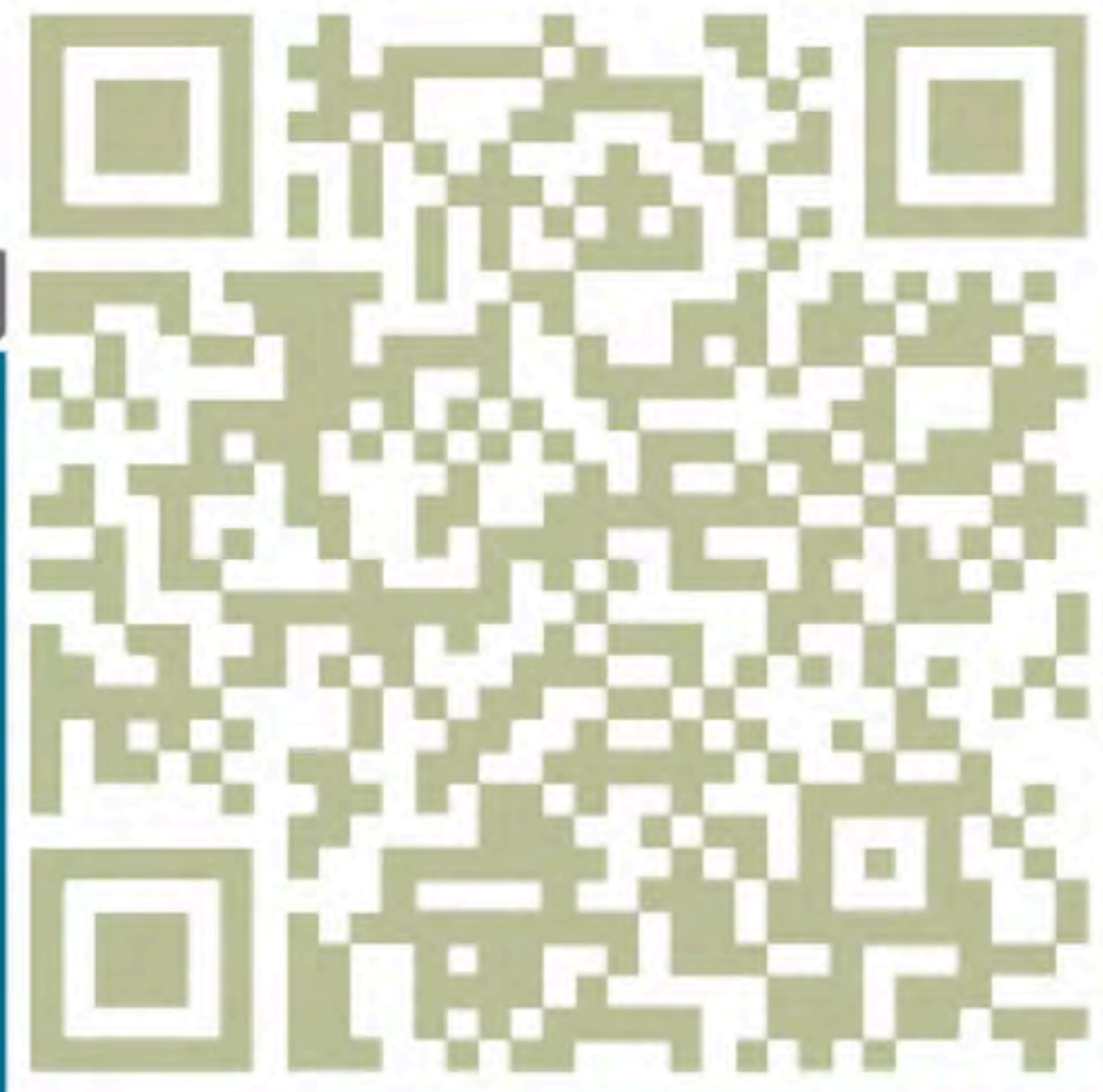


RICHMOND Welcomes You



DOWNLOAD YOUR
IMG TOOLKIT



- ✓ current IMG job postings
- ✓ essential information
- ✓ career supports + resources
- ✓ clinic + community highlights
- ✓ settlement services

 **Richmond**
Division of Family Practice
An FPSC Initiative

Family physicians working together to achieve common health care goals, funded by the Family Practice Services Committee (B.C. Ministry of Health and Doctors of BC)

We acknowledge and thank the Musqueam, Stz'uminus, Kwantlen, Stó:lō, Tsawwassen, and Coast Salish First Peoples, on whose traditional, unceded, and stolen territories we live, work, and play. Acknowledging that we are on the traditional territories of Indigenous communities is an expression of cultural humility, and involves recognizing our duty and desire to support the provision of culturally safe care to First Nations, Inuit, and Métis people.

email us: recruitment@rdfp.ca

richmondhealthcarejobs.ca



 **Richmond**
Division of Family Practice
An FPSC initiative

richmondhealthcarejobs.ca



**PLAY
VIDEO**



▶ ⏪ 🔊 0:00 / 2:26



Great Reasons to Choose RICHMOND

Options to fit your practice and lifestyle preferences	Modern, innovative, tech-enhanced family practices	Team-based, collaborative clinics FPs NPs MOAs ACPs	Robust PCN health care team OTs PTs RNs RDs SWs MHCs CPs	Thousands of patients registered and ready to be connected to a primary care provider
Practice support to guide panel development	Meaningful engagement and networking with Division colleagues	Downtown Vancouver, YVR, Whistler, and the US border conveniently nearby	Accessible by SkyTrain, public transit, and major highways	More than 800 multicultural restaurants to experience, including breweries and wineries
Abundance of young families, great schools, and fun things to do with kids	Endless recreation: trails, bike paths, parks, beaches, shopping, and entertainment	Permanent full-time and short-term locum opportunities available	View jobs at Health Match BC healthmatchbc.org	Connect with the Richmond Division of Family Practice for support richmondhealthcarejobs.ca

The Richmond Primary Care Community welcomes you.

Richmond's clinical network of health care practitioners is designed to provide improved access to patient-centred primary care. Family physicians and nurse practitioners work in supportive teams that include nurses, allied health care providers, and medical office staff.

Dedicated practice support teams, abundant work opportunities, and a fantastic place to live and play are just some of the reasons so many family physicians are saying yes to a career in Richmond. **Join us.**

 **Richmond**
Division of Family Practice
An FPSC initiative

richmondhealthcarejobs.ca

Two Richmond Family Practice Opportunities



A Steveston Medical Clinic
HMBC POSTING #VCHA-5104

B Garden City Medical
HMBC POSTING #VCHA-5083

PRIMARY CARE NETWORKS
Richmond

- PCN 1 WEST
- PCN 2 CITY CENTRE
- PCN 3 EAST

Richmond
Division of Family Practice
An FPSC initiative

richmondhealthcarejobs.ca

Steveston Medical Clinic IS RECRUITING!

**HealthMatch BC
Posting Number
VCHA-5104**

Steveston Medical Clinic is looking for a permanent family physician to join its team. Located in beautiful Steveston near walkways, restaurants, and the riverside, this facility is fully equipped for an FP. Patients have high medical literacy and engagement. Colleagues are unified in practicing to the highest standard and often work cooperatively, consulting on cases to optimize patient care and to support each other. Staff is long-term, stable, and professional.

Services Offered

Primary Care
PCN Services
Obstetrics/Maternity Care
Allergy Shots

Amenities

8 Examination Rooms
4 FP/Clinician Workstations
4 MOA Workstations
Lunch Room
Spacious Waiting Room
Free on-site Parking
Bike Rack
Sufficient Storage

Technology

Intrahealth EMR + eFax
Online Booking
Virtual Care (phone)
Chart access
VOIP (Shaw)
CareConnect

Languages

English, Spanish, Nepali, Hindi, Portuguese

Staff

4 full-time + 1 part-time FPs
1-2 locum FPs
PCN Chronic Disease Mgt Nurse
PCN Clinical Pharmacist
Registered Nurse
2 full-time + 2 part-time MOAs
1 Clinic Manager
1 Bookkeeper
Supported by PCN OT/PT/SW

Financial Arrangement

IMGs may choose to practice between either the longitudinal family practice (LFP), primary care network new-to-practice (PCN NTP) or fee-for-service (FFS) contracts. The financial agreement and billing split will be negotiated.

Coverage Arrangement

All FPs participate in our own large call group of 10 on a one week on-call schedule. We rarely receive after-hours calls. Cross-coverage is available for illness or short vacations. Longer vacations will be managed with locums.

Physician Lead

Dr. Robert Baker

Location

204-3811 Chatham St, Richmond

Practice Hours

Mon-Fri 8:30am-4:30pm

Website

stevestonmedical.com



richmondhealthcarejobs.ca

Garden City Medical IS RECRUITING!

Garden City Medical Centre is looking for a permanent family physician to join its team.

This well-established and collegial modern family practice has good team support and scheduling flexibility, and is a great opportunity for a new FP to start their own practice. Located in a busy residential plaza, this newly renovated clinic offers great access to shops, restaurants, and transit.

Services Offered

Primary Care
Cryotherapy

Amenities

Four Examination Rooms
Private Offices for new FPs
Seven FP Workstations
Two MOA Workstations
Minor Procedures Room
Spacious Waiting Room
Lunch Room
Free On-site Parking
Bike Rack
Storage Space
Staff Washroom
In shopping plaza near amenities:

- PCN Allied Care Professionals, labs, specialists, pharmacy, shopping, parks, restaurants, public transit

Technology

Juno EMR
Online Booking
Dilpad VOIP
SR Fax
CareConnect
PharmaNet
Virtual Care (phone)

Staff

One full-time FP
Two part-time FPs
Two part-time MOAs

Languages

English, Mandarin, Cantonese

Financial Arrangement

IMGs may choose to practice between either the longitudinal family practice (LFP), primary care network new-to-practice (PCN NTP) or fee-for-service (FFS) contracts. The financial agreement and billing split will be negotiated.

Coverage Arrangement

Family Physicians work in their own call group for coverage.

Physician Lead

Dr. Jennifer Wang

Location

190-9040 Blundell Road, Richmond

**HealthMatch BC
Posting Number
VCHA-5083**

Practice Hours

Mon-Fri 9am-4pm
Sat 9am-3pm

Website

gardencitymed.ca

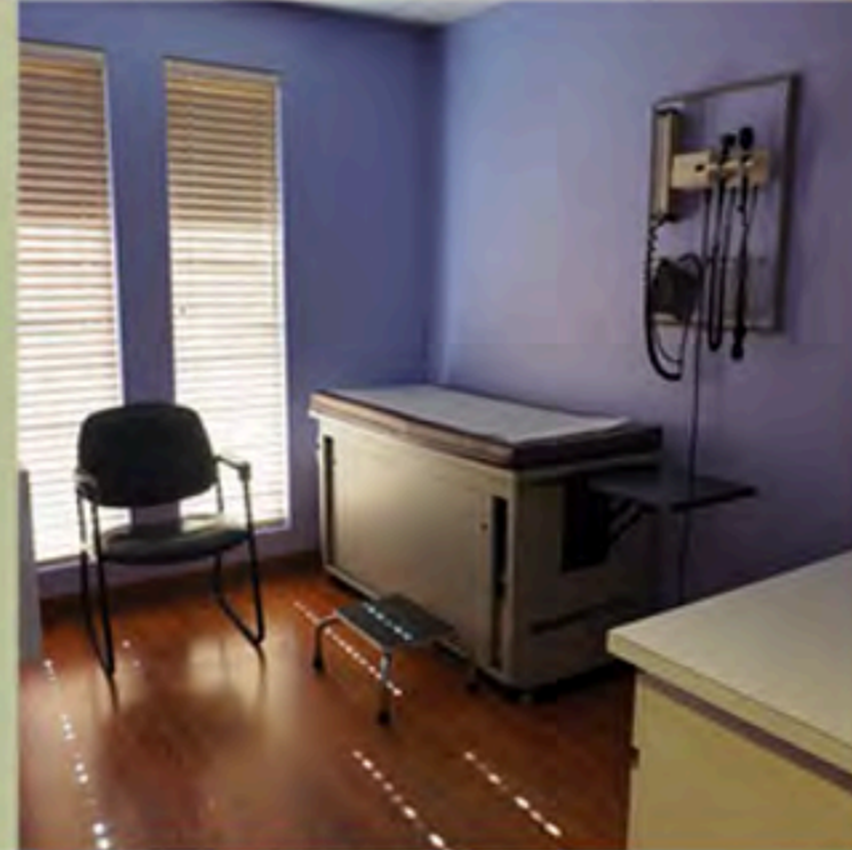
What's so special about CLINICS IN RICHMOND?

IMG Toolkit
on our
website

Collegial
group
practices



Supported
by strong
MOA and office
staff teams



Modern
clinic
spaces



Wonderful places to spend your workdays.

The place we work impacts so many aspects of our lives. To make the right decision, it's important to ask the right questions.

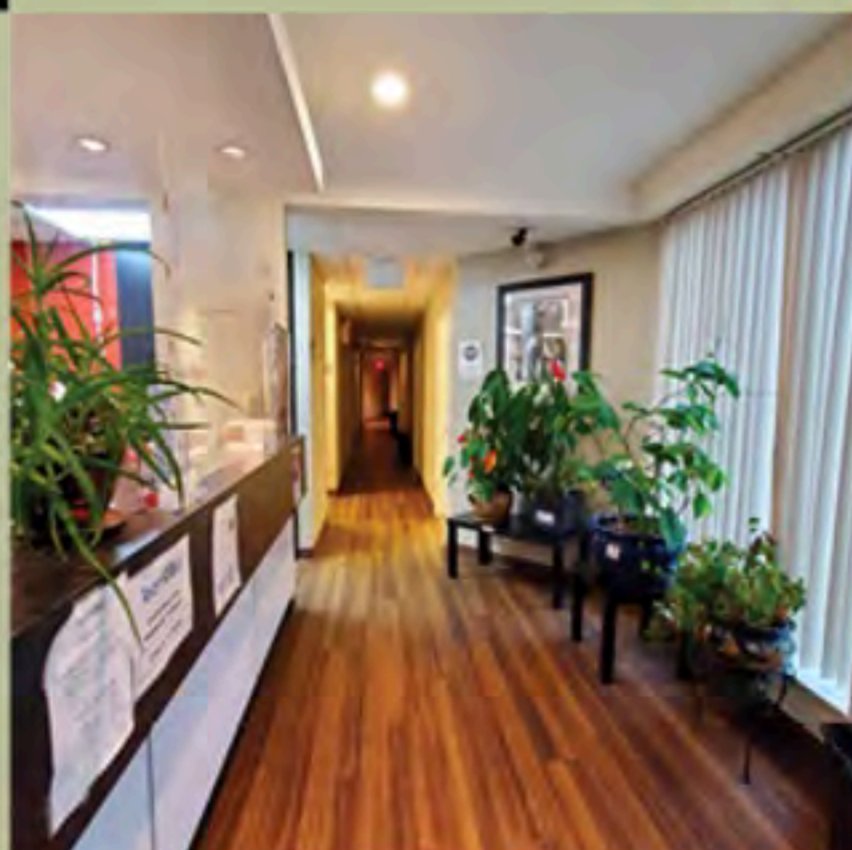
Enhanced with
technologies
and EMR
software



Integrated with
their local Primary
Care Network



After-hours
care system
in place



Collaboration
with local practice
supports



Easily
accessible
via public
transit and
highways



- ✓ Will I have colleagues who support each other?
- ✓ Do the staff work well together?
- ✓ Do I like the feeling when I step into the clinic?
- ✓ Has office design and technology kept up with modern times?
- ✓ Is it easy for me to get there?

► Say **YES** to these questions and more, here in Richmond. **JOIN US**

richmondhealthcarejobs.ca

DIVISION SERVICES For Family Physicians

Valuable supports for you and your practice.

In every practice, there is much more going on behind the scenes than seeing patients. A range of supports and services is available to members and their staff. What practice supports do you need?

Reach out. We are here to help.

Don't see what you need listed?
Let us know how what other services would be valuable.



Physicians Who Choose **RICHMOND** are...





Thank You!

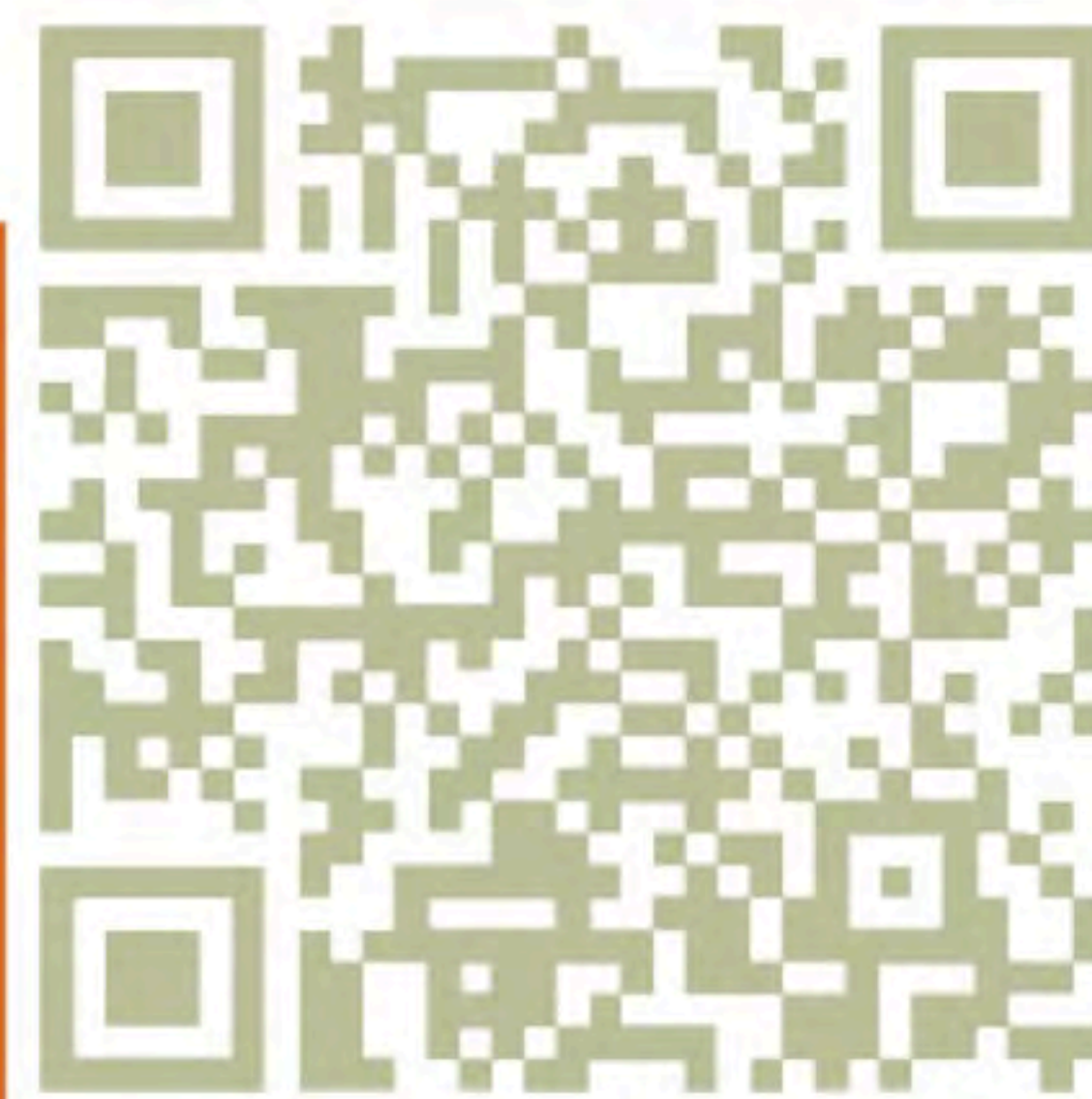


Next Step:

Contact your
Division Recruitment Team
recruitment@rdfp.ca

We are available to discuss work opportunities in Richmond and how we can support you in your practice journey.

- **TIP!** Include details about yourself and the HMBC job numbers that interest you.



**DOWNLOAD YOUR
IMG TOOLKIT**

 **Richmond**
Division of Family Practice
An FPSC initiative

richmondhealthcarejobs.ca